

UPHOLSTERIES

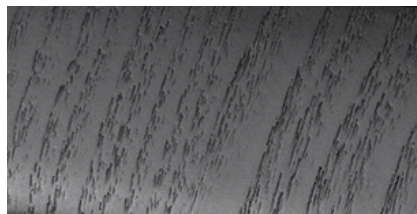


Perforated Fine Nappa Leather, Amber in Charcoal interior (RC20)



Perforated Fine Nappa Leather, Maroon Brown in Charcoal Interior (RC30)

INLAYS



Black Ash Inlays

V O L V O

VOLVO XC90 SPECIFICATION SHEET

ENGINE VARIANT	B6 ULTIMATE
TECHNICAL DATA	
Capacity (ccm)	1969
Max output in hp	300
Max torque in Nm	420
Ground clearance (mm)	238
Ground clearance (mm) with air suspension	267
Fuel Type	Petrol (Mild Hybrid)
Battery	48V
TRANSMISSION/ENGINE	
Automatic 8-speed AWD	S
Stop/Start	S
CLIMATE	
Air Purifier system with PM 2.5 sensor	S
4-zone Electronic Climate Control	S
Climate unit, third seat row	S
Sun blind, rear side door windows	S
Panoramic sunroof with power operation	S
LOCKING AND SECURITY SYSTEMS	
Alarm	S
Interior motion sensor for Alarm	S
Inclination sensor for Alarm	S
Key remote control high level	S
Keyless entry	S
Power child lock, rear side doors	S
Central lock switch with diode in front and rear doors	S
Laminated side windows	S
SEATS	
Ventilated Nappa leather upholstery	S
Power adjustable drivers seat with memory	S
Power adjustable passenger seat with memory	S
Power adjustable side support	S
4 way power adjustable lumbar support	S
Power cushion extension driver side	S
Power cushion extension passenger side	S
Backrest massage, front seats	S
Heated Front Seats	S
Centre armrest with cupholders	S
Armrest with cupholder and storage LH/RH side in third row	S
INTERIOR	
31.24 cms (12.3 inch) Driver Display	S
RC20 & RC30 / Black Ash Inlays	S
Illuminated vanity mirrors in sunvisor LH / RH side	S
Leather covered dashboard	S
Artificial Leather Steering wheel, 3 spoke, with uni deco inlays	S
Crystal Gear lever knob	S
Automatically dimmed inner and exterior mirrors	S
Sillmoulding 'Volvo' metal illuminated	S

Kindly check with your local authorised Volvo Cars dealer on the exterior colours, upholsteries and wheel options available for your car.

MODEL VARIANT	B6 ULTIMATE
LUGGAGE COMPARTMENT	
Temporary sparewheel	S
Jack	S
Power Operated Tailgate	S
Grocery bag holder	S
Cargo opening scuff plate - metal	S
Soft load net stored in bag	S
First aid kit	S
Warning Triangle	S
12V outlet in luggage area	S
Body Cover	S
EXTERIOR	
Bright integrated roof rails	S
Bright decor side windows	S
Colour coordinated door handles	S
Colour coordinated rear view mirror	S
Foglights in front spoiler	S
LED headlights with automatic bending	S
Prep for Illuminated Running Boards	S
EBL, Flashing Brake Light and Hazard Warning	S
Retractable rear view mirrors	S
SUPPORT SYSTEMS	
Adaptive Cruise Control	S
Pilot Assist	S
Collision Mitigation Support, front	S
Lane Keeping Aid	S
360° camera	S
Park Assist Front, Rear and side	S
Personal settings, power steering	S
Drive mode settings in CSD	S
Hill Start Assist	S
Hill Descent Control	S
Rain sensor	S
Graphical Head-Up Display	S
Blind spot information system with CTA	S
SAFETY	
Airbag, Driver & Passenger side	S
Knee airbag driver side	S
SIPS airbags	S
Inflatable curtains	S
Whiplash protection, front seats	S
Belt minder all seats	S
Cut-Off Switch Passenger Airbag	S
Pyrotechnical pretensioners, front / rear	S
EBL, Flashing Brake Light and Hazard Warning	S
High positioned rear brake lights	S
Intelligent Driver Information System (IDIS)	S
AUDIO, NAVIGATION & TELEMATICS	
Premium Sound by Bowers and Wilkins (1400 W, 19 Speakers)	S
Remote control buttons in steering wheel	S
USB & Bluetooth connections	S
Wireless Charging	S
Speech function	S
Digital Service package	S
Volvo cars app	S
Android powered infotainment system including google services	S
Carplay (iPhone with wire)	S
CHASSIS	
Air suspension, 4 corner	S
Chassis, Four-C	S
WHEELS	
50.8 cms (20 inch) 10-spoke Black Diamond-cut Alloy wheel	S
Tire pressure monitoring system	S

VOLVO XC90

EXTERIOR COLOURS, TRIM LEVEL, UPHOLSTERIES AND ALLOY WHEELS



707 - CRYSTAL WHITE PEARL



717 - ONYX BLACK



723 - DENIM BLUE



731 - PLATINUM GREY



736 - BRIGHT DUSK



50.8 cms (20 inch) 10-spoke Black Diamond-cut Alloy wheel